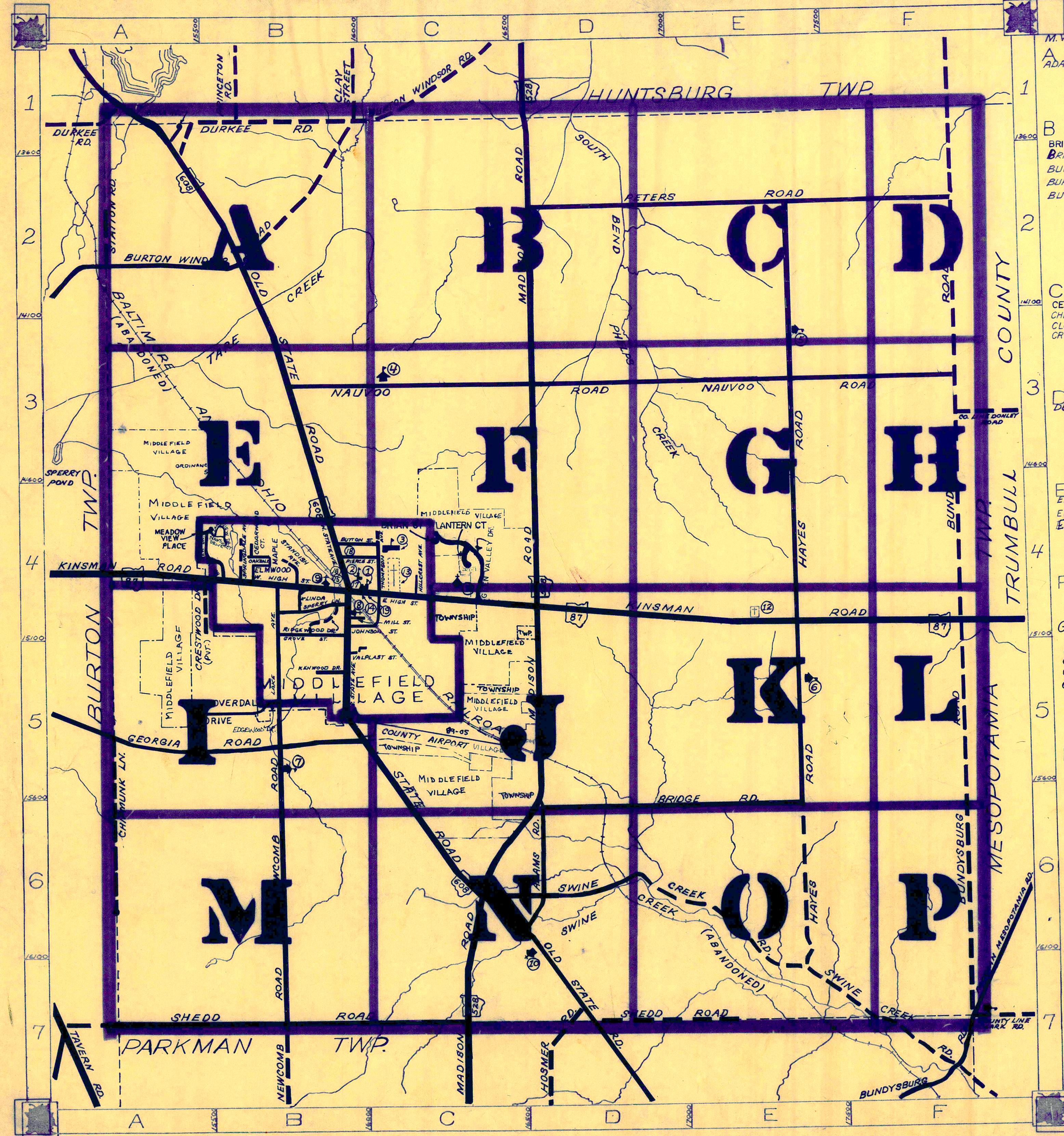


ROAD INDEX



- M.V. = MIDDLEFIELD VILLAGE
- A ADAMS RD. D6 I
 - B BURIAN CT. M.V. JOHNSON ST. (M.V.) B4
 - B BRIDGE RD. D6-E6
 - B BUNDYSBURG RD. F1-F7
 - B BURTON WINDSOR RD. A2-B1
 - B BUTTON ST. (M.V.) B4
 - C CEDARWOOD CT. (M.V.) B4
 - C CHIPMUNK LN. A5-A6
 - C CLOVERDALE DR. B5
 - C CRESTWOOD DR. (PVT) B4
 - D DURKEE RD. A1-B1
 - E HIGH ST. (M.V.) B4-C4
 - E ELMWOOD ST. M.V.
 - E EDGWOOD DR. M.V.
 - F GEORGIA RD. A5-B5
 - F GLEN VALLEY DR. (M.V.)
 - F GROVEST. (M.V.)
 - F GURA RD. A1
 - G HAYES RD. E2-E7
 - G HILLCREST AVE. (M.V.) C4
 - G HOSMER RD. D7
 - H HUNTSBURG TWP.
 - I INDIAN WINDSOR RD.
 - J JOHNSON ST. (M.V.) B4
 - K KENWOOD ST. (M.V.) B5
 - K KINSMAN RD. A4-F4
 - L LAKE AVE. (M.V.) B4-B5
 - L LAKEVIEW DRIVE (M.V.) B4
 - L LANTERN COURT (M.V.) C6
 - L LINDA AVE. (M.V.) B4
 - M MADISON RD. D1-C7
 - M MAPLE AVE. (M.V.) B4
 - M MEADOW VIEW PL. A4-B4
 - M MILL ST. (M.V.) B4
 - N NANTUCKET DR. (M.V.) B4
 - N NAUVOO RD. B3-F3
 - N NEWCOMB RD. B5-B7
 - N N. STATE AVE. (M.V.) B4
 - N NORTH VIEW DR. (M.V.) B4
 - O OAKDALE (M.V.) B4
 - O OLD STATE RD. A1-D7
 - P PETERS RD. D2-F2
 - P PIERCE ST. (M.V.) B4
 - Q RIDGEWOOD DR. (M.V.) B4
 - R
 - S SHEDD RD. A7-E7
 - S S. STATE AVE. (M.V.) B4-B5
 - S SPERRY LN. (M.V.) B4
 - S SPRINGDALE AVE. (M.V.) B4
 - S STANDISH AVE. (M.V.) B4
 - S STATION RD. A1-A2
 - S SWINE CREEK RD. C6-F7
 - T THOMPSON AVE. (M.V.) C4
 - U
 - V VALPLAST ST. (M.V.) B5
 - W HIGH ST. (M.V.) B4
 - X
 - Y
 - Z

- 1 CARDINAL JUNIOR HIGH SCHOOL
- 2 MIDDLEFIELD ELEMENTARY SCHOOL
- 3 CARDINAL HIGH SCHOOL
- 4 AMISH SCHOOL
- 5 AMISH SCHOOL
- 6 AMISH SCHOOL
- 7 AMISH SCHOOL
- 8 THE FIRST METHODIST CHURCH
- 9 WESLEYAN METHODIST CHURCH
- 10 MENNONITE CHURCH
- 11 ST. LUCY'S CATHOLIC CHURCH
- 12 HAYES CORNERS CEMETERY
- 13 MIDDLEFIELD CEMETERY
- 14 UNITED STATES POST OFFICE
- 15 MIDDLEFIELD VOL. FIRE DEPT.
- 16 MIDDLEFIELD MUNICIPAL CENTER
- 17 MIDDLEFIELD PUBLIC LIBRARY
- 18 BETHESDA NURSING HOME
- 19 MIDDLEFIELD TOWN HALL

MIDDLEFIELD TOWNSHIP

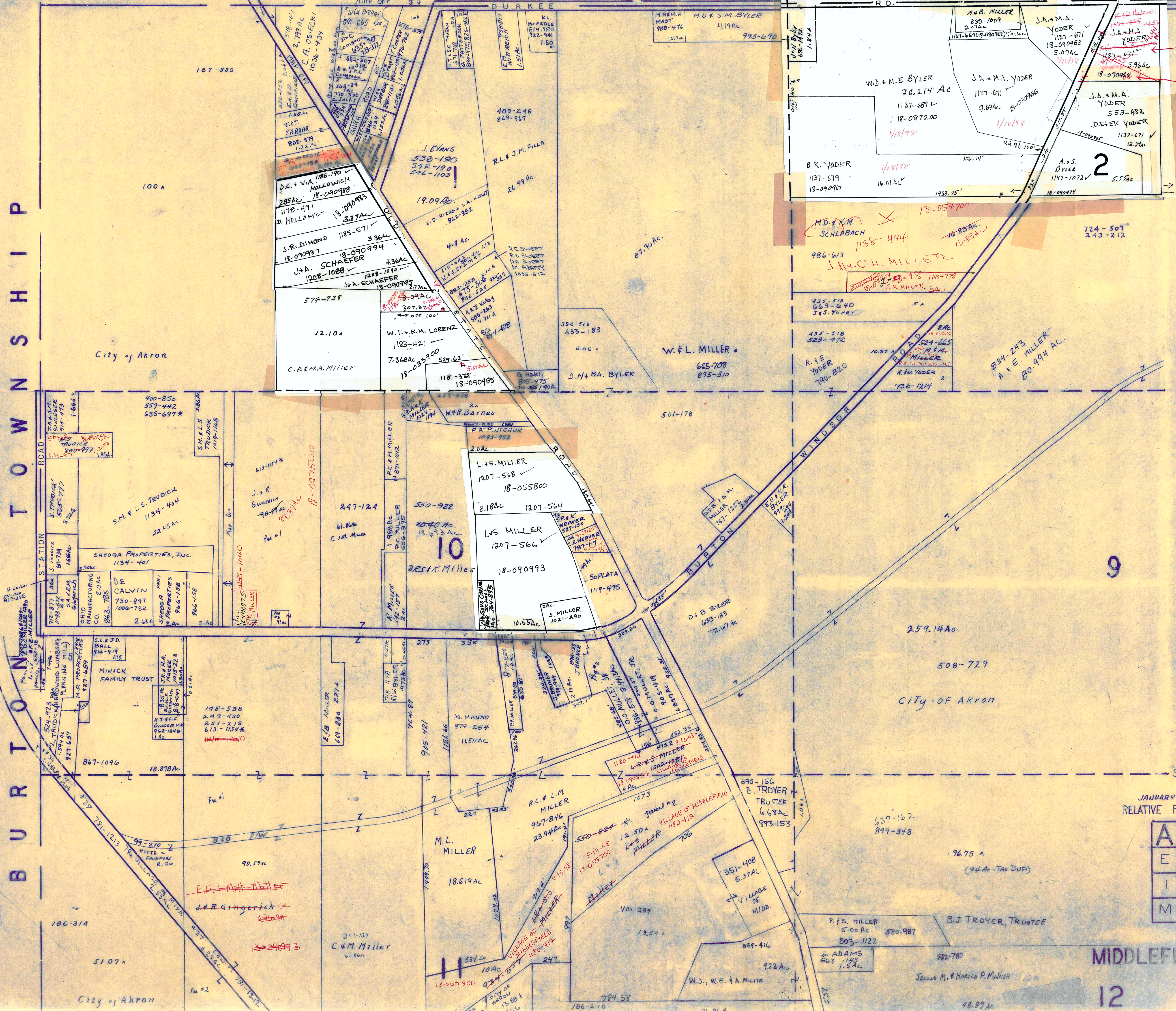
SCALE: 1"=2000'
 ROBERT L. PHILLIPS,
 GEauga COUNTY ENGINEER

- UNPAVED ROADS
- PAVED ROADS
- RAILROAD
- TOWNSHIP LINE
- COUNTY LINE
- VILLAGE LINE

T O W N S H I P

HUNTSBURG

TOWNSHIP



* Inadequate Description

N

SCALE 1" = 300'

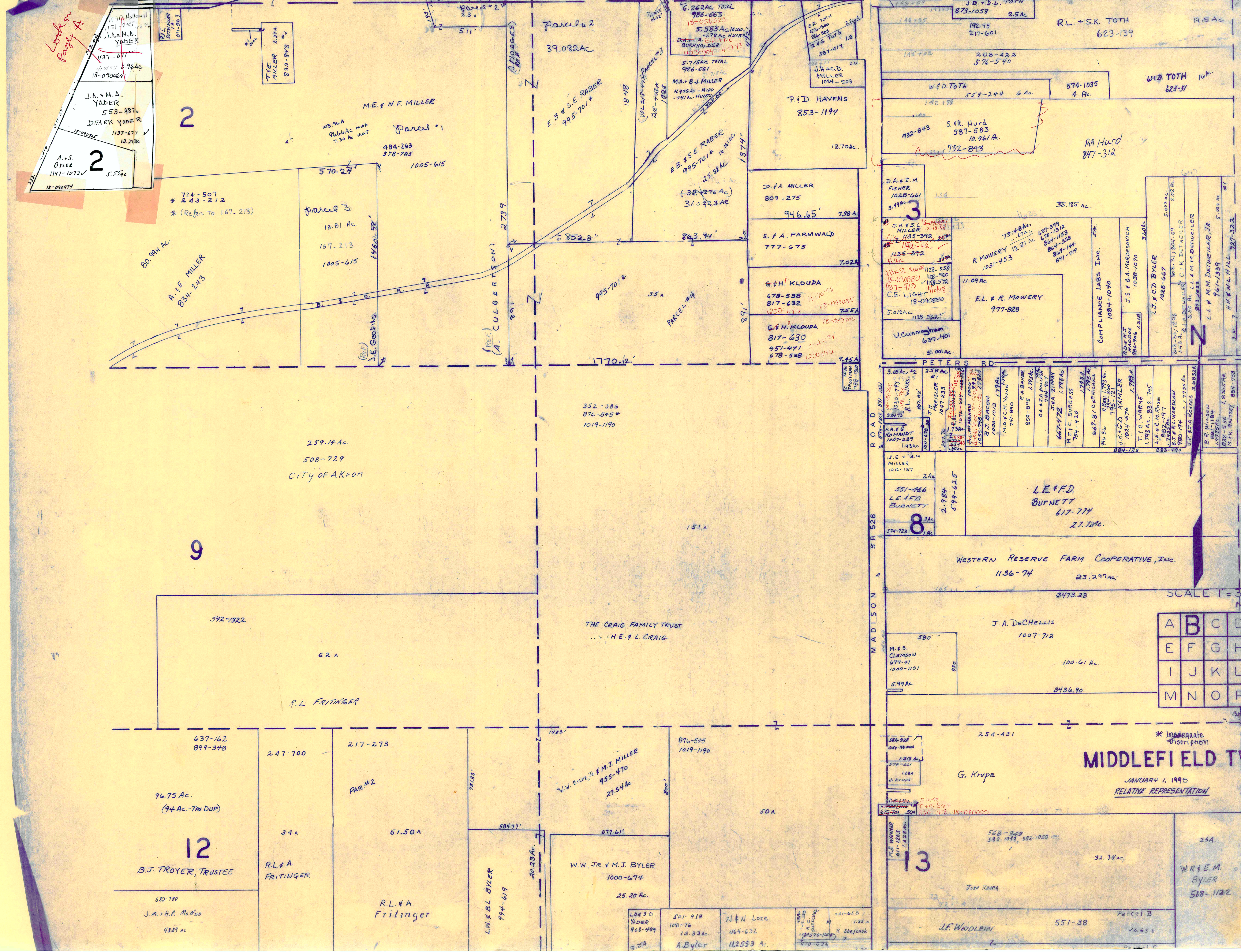
JANUARY 1, 1998
RELATIVE REPRESENTATION

A	B	C	D
E	F	G	H
I	J	K	L
M	N	O	P

MIDDLEFIELD TWP

12

HUNTSBURG TOWNSHIP



Section 2
A.S. Byler
1147-1072
5.55 ac

2

2

* 724-507
243-212
(Refer To 167-213)

80.94 ac
A.F. MILLER
834-243

Parcel 3
18.81 ac
167-213
1005-615

Parcel #1
484-263
578-785
1005-615

Parcel #2
39.082 ac

E.B. & E. RABER
995-701

E.B. & E. RABER
995-701
25.38 ac
(38-276 ac)
31.02 x 3 ac

D.F. MILLER
809-275
946.65'

S.F.A. FARMWALD
777-675
7.02 ac

G.H. KLOUDA
678-538
817-632
1200-1144
18-09085
7.55 ac

G.H. KLOUDA
817-630
451-471
678-538
1200-1144
5.00 ac

D.A. & I.M. FISHER
102B-661
3.49 ac

J.H. & S.L. MILLER
1135-392
4.39 ac

J.H. & S.L. MILLER
1135-392
1128-558
1137-413
1128-572
18-09080
5.012 ac

J. CUNNINGHAM
637-401
5.00 ac

R. MOWERY
1031-453
11.09 ac

E.L. & R. MOWERY
977-828

COMPLIANCE LABS INC.
1084-1040

J.S. & G.A. MARDOSAVICH
1038-1070

Z.J. & C.D. BYLER
1028-667

L.L. & M.M. DETWILER, JR.
967-1359

H.K. & M.L. HILL
927-322

9

542-1322
62 a
R.L. FRITINGER

THE CRAIG FAMILY TRUST
... H.E. & L. CRAIG

WESTERN RESERVE FARM COOPERATIVE, INC.
1136-74
23.297 ac

J.A. DeCHELLIS
1007-712
100.61 ac

A	B	C	D
E	F	G	H
I	J	K	L
M	N	O	P

637-162
899-348
96.75 ac.
(94 ac - Tax DUP)
12
B.J. TROYER, TRUSTEE
583-780
J.M. & H.P. McMan
48.89 ac

247-700
34 a
R.L. & A. FRITINGER

217-273
PAR. #2
61.50 a
R.L. & A. Fritinger

751.83'
20.33 ac
L.M. & B.L. BYLER
994-619

876-545
1019-1190
W.W. Byler, Jr. & M.J. MILLER
955-470
27.54 ac
25.20 ac
W.W. Jr. & M.J. BYLER
1000-674

876-545
1019-1190
50 a
A. Byler
12553 ac

582-949
582-1078, 582-1050
32.34 ac
J.F. WEIDLEIN
551-38
Parcel B
12.63 a

254-431
G. Krupa
25 a
W.R. & E.M. BYLER
588-1132

MIDDLEFIELD TWP.

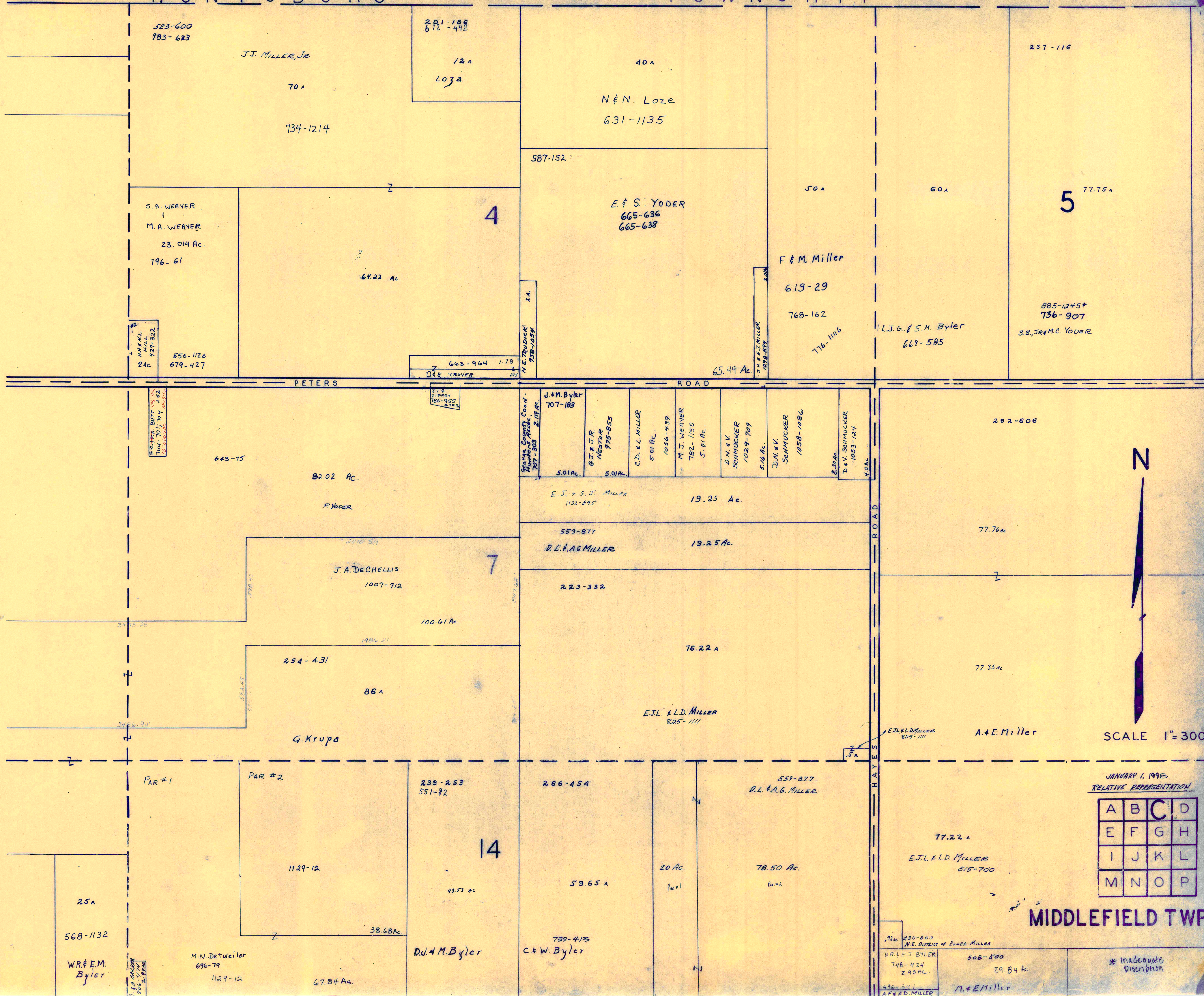
JANUARY 1, 1998
RELATIVE REPRESENTATION

* Inadequate description

SCALE T=300

HUNTSBURG

TOWNSHIP



SCALE 1" = 300'

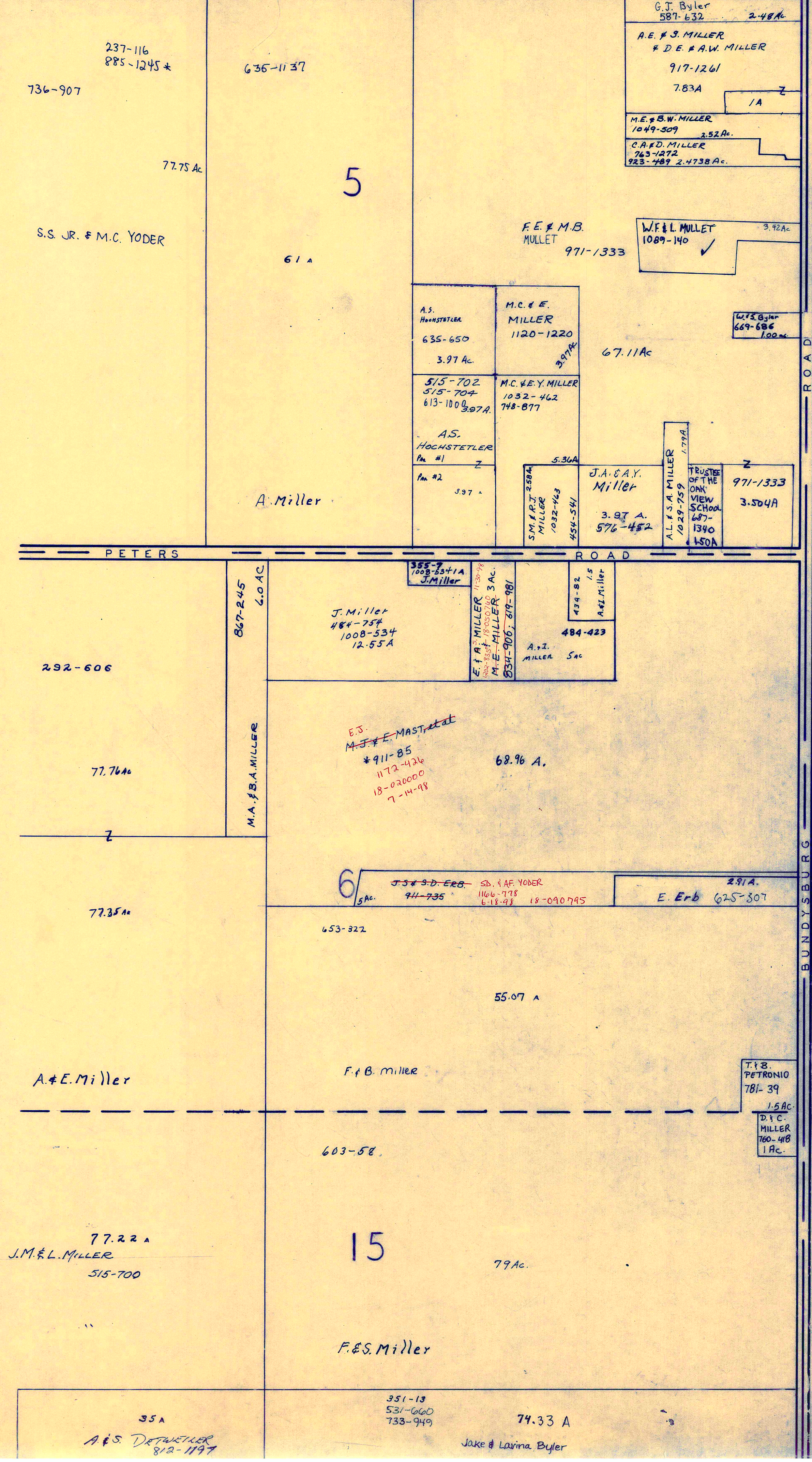
JANUARY 1, 1992
RELATIVE REPRESENTATION

A	B	C	D
E	F	G	H
I	J	K	L
M	N	O	P

MIDDLEFIELD TWP

* Inadequate Description

HUNTSBURG TOWNSHIP



BUNDYSBURG ROAD
TRUMBULL COUNTY



SCALE 1" = 300'

JANUARY 1, 1998
RELATIVE REPRESENTATION

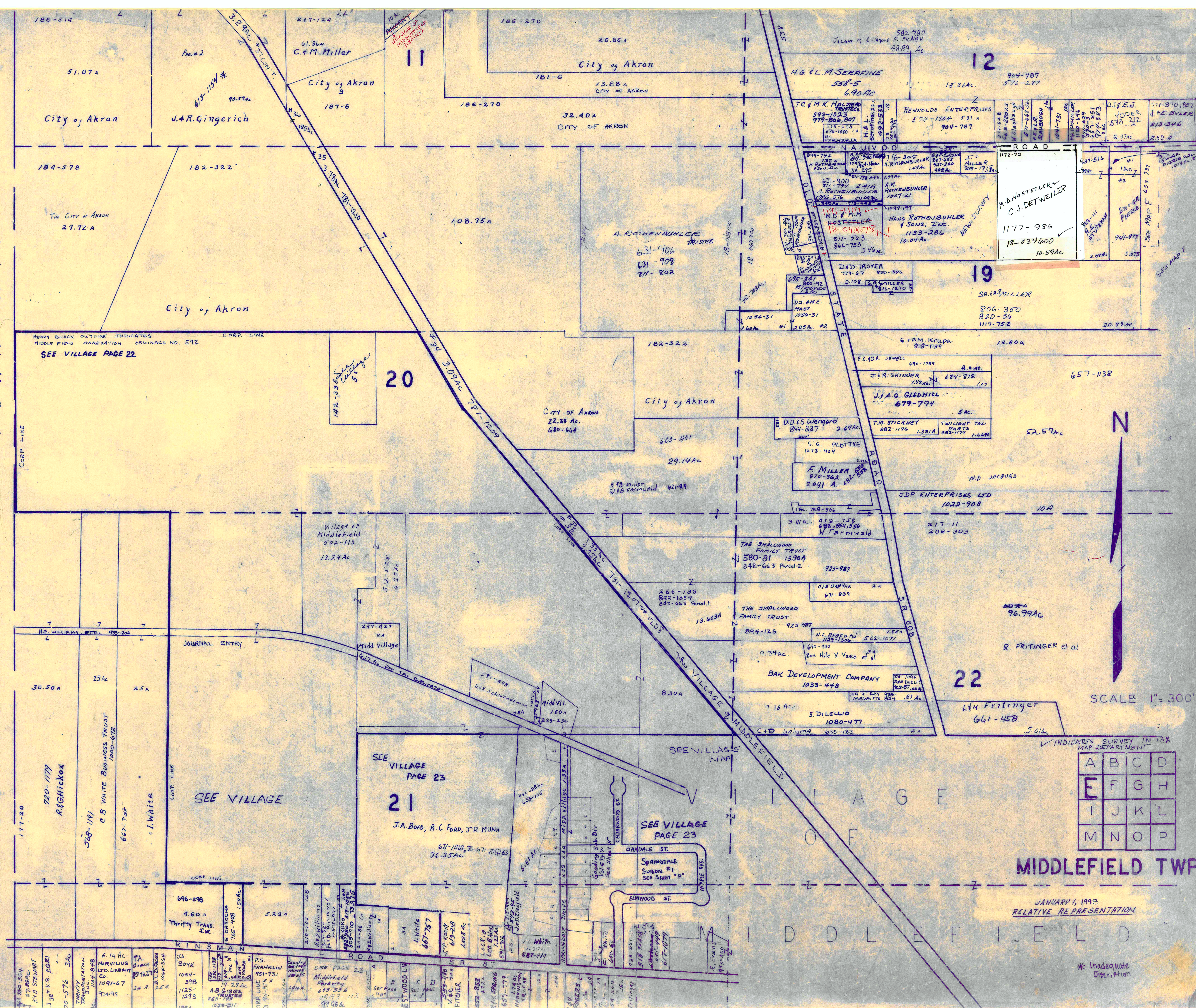
A	B	C	D
E	F	G	H
I	J	K	L
M	N	O	P

* Inadequate Distribution

MIDDLEFIELD TWP

TOWNSHIP

BURTON



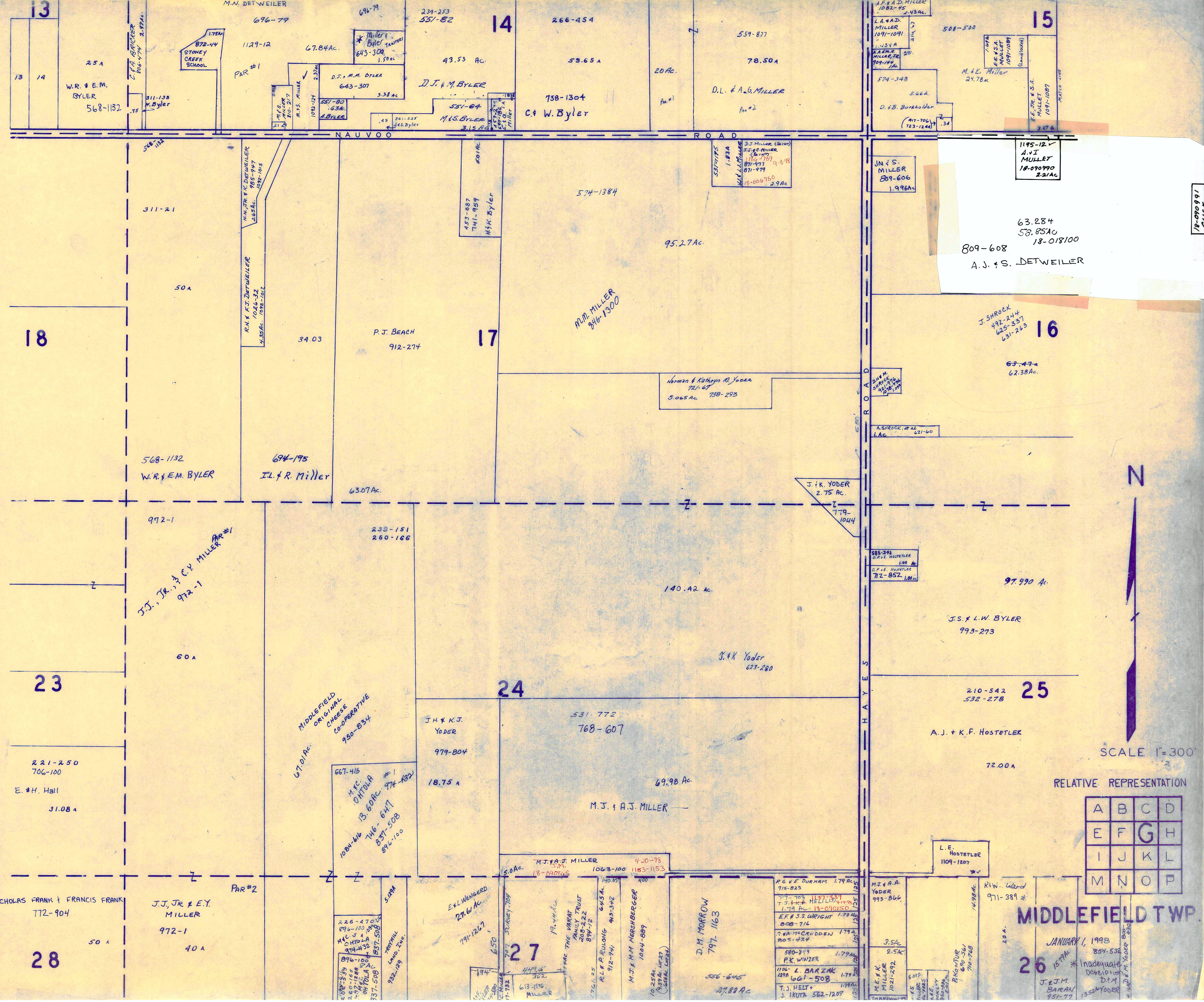
INDICATES SURVEY IN TAX MAP DEPARTMENT

A	B	C	D
E	F	G	H
I	J	K	L
M	N	O	P

MIDDLEFIELD TWP

JANUARY 1, 1993
RELATIVE REPRESENTATION

* Inadequate
Description



18-090991
BYLER

SCALE 1"=300'

RELATIVE REPRESENTATION

A	B	C	D
E	F	G	H
I	J	K	L
M	N	O	P

MIDDLEFIELD TWP.

JANUARY 1, 1998
 *Inadequate Description
 D.M. MORROW
 1350 YODER

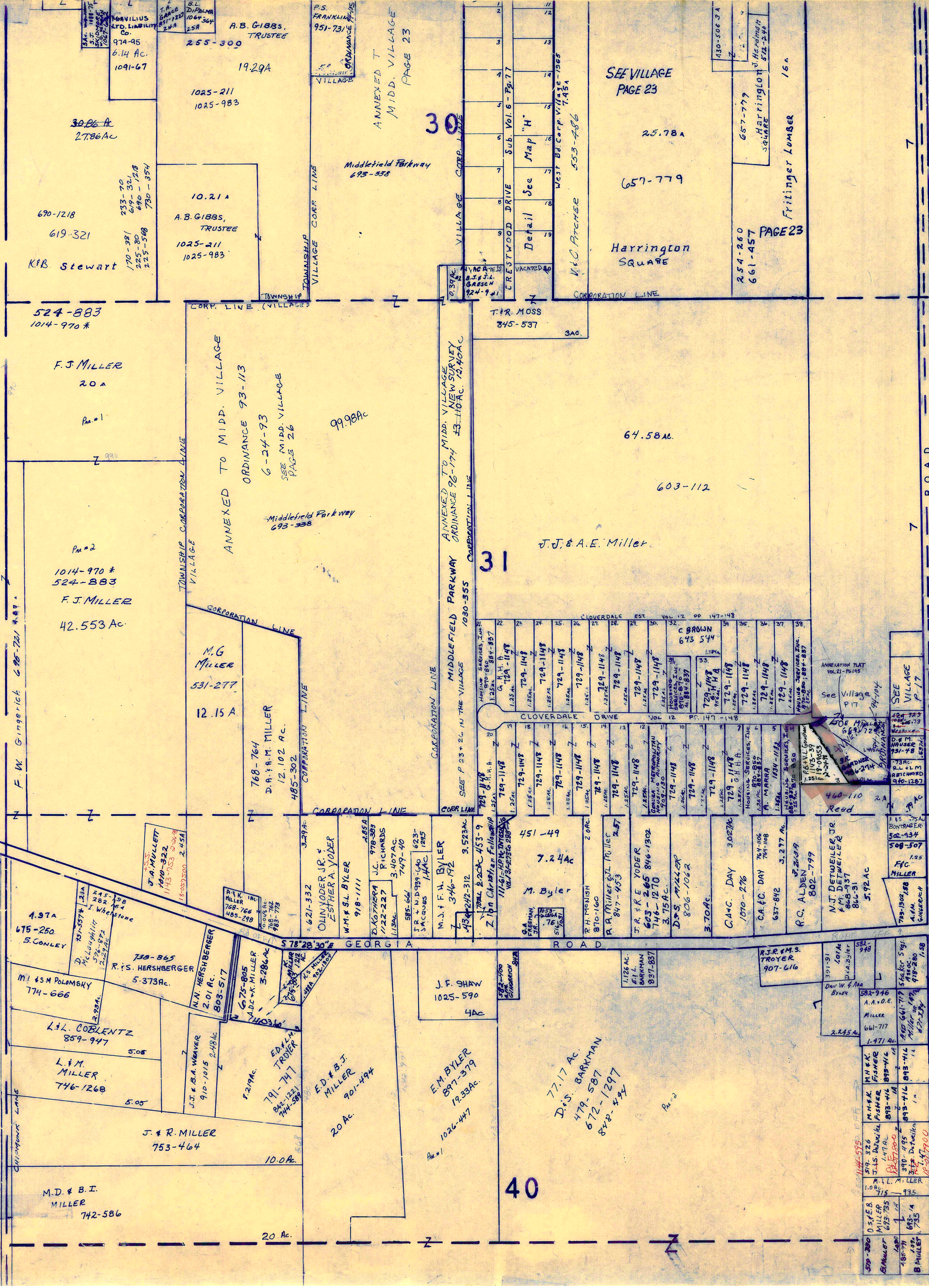
T O W N S H I P
B U R T O N

M I D D L E F I E L D

29

NEWCOMB & GEORGIA ROADS

- 1. J. CARRAHER 1104-663 .25
- 2. A.L. GINGERICH 597-697 .18
- 3. A. GINGERICH 1095-1094 .005AC



VILLAGE 32

- CORP LINE
- *1 GEN. IND. AN OHIO CORP Vol. 282 P. 320
 - *2 GEN. IND. A DELAWARE CORP PARCEL 1 332 - 390
 - *3 GEN. IND. 223-25 367 - 392
 - *4 GEN. IND. A DELAWARE CORP PARCEL 2 332 - 390
 - *5 GEN. IND. A DELAWARE CORP PARCEL 3 332 - 390
 - *6 GEN. IND. CO. 362 - 562
 - *7 GEN. CO. A DELAWARE CORP 700 - 1072
 - *8 E. YOUNG ET AL 259 - 314

SCALE 1"=300'

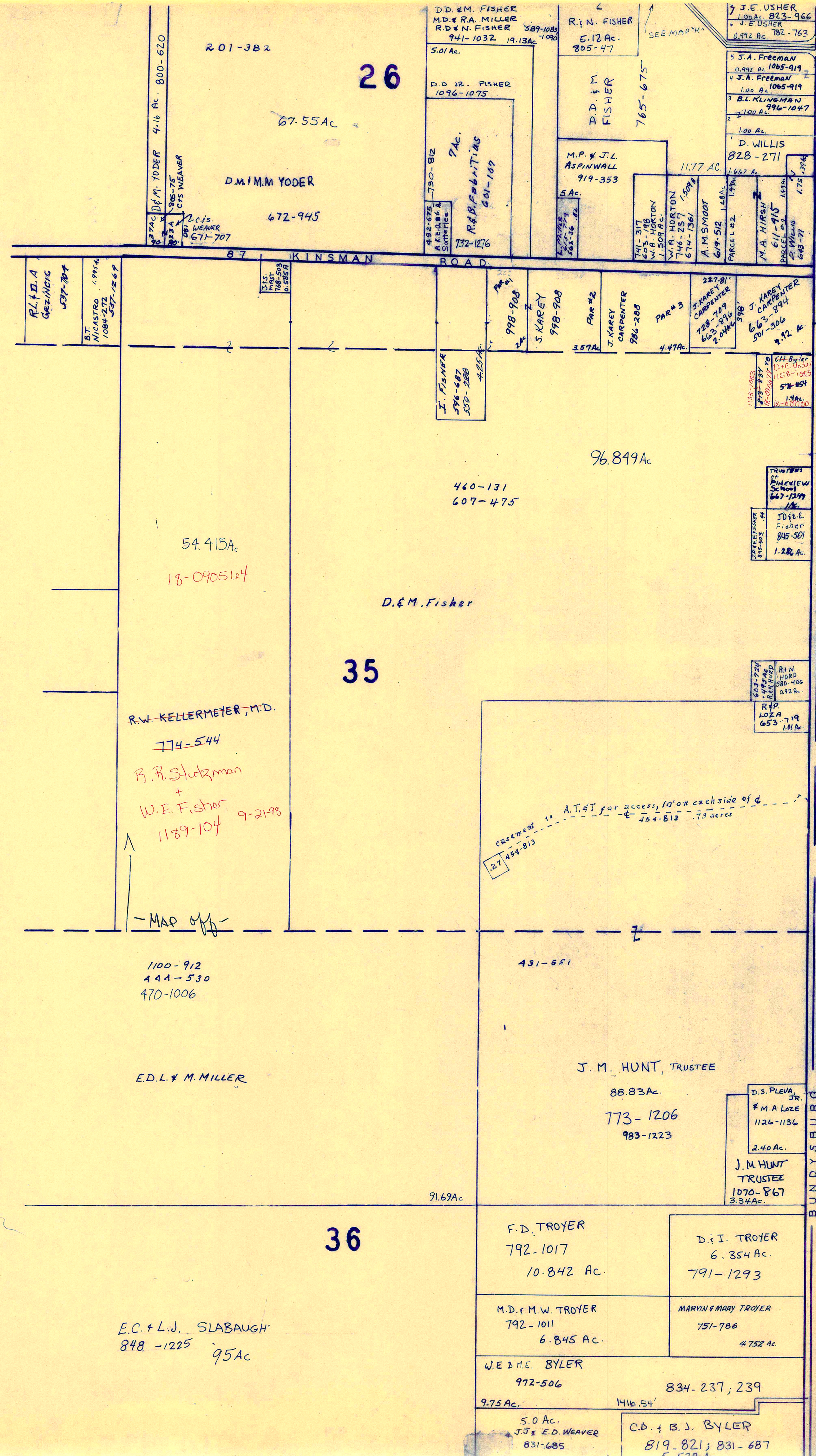
A	B	C	D
E	F	G	H
I	J	K	L
M	N	O	P

MIDDLEFIELD TWP

247-222 18-026000 JANUARY 1, 1993
E.M.C.H. GIBBS, TRUSTEES 1183-330, 1183-332, 1183-334

RELATIVE REPRESENTATION

* Inadequate description.



BUNDYSBURG COUNTY



SCALE 1" = 300'

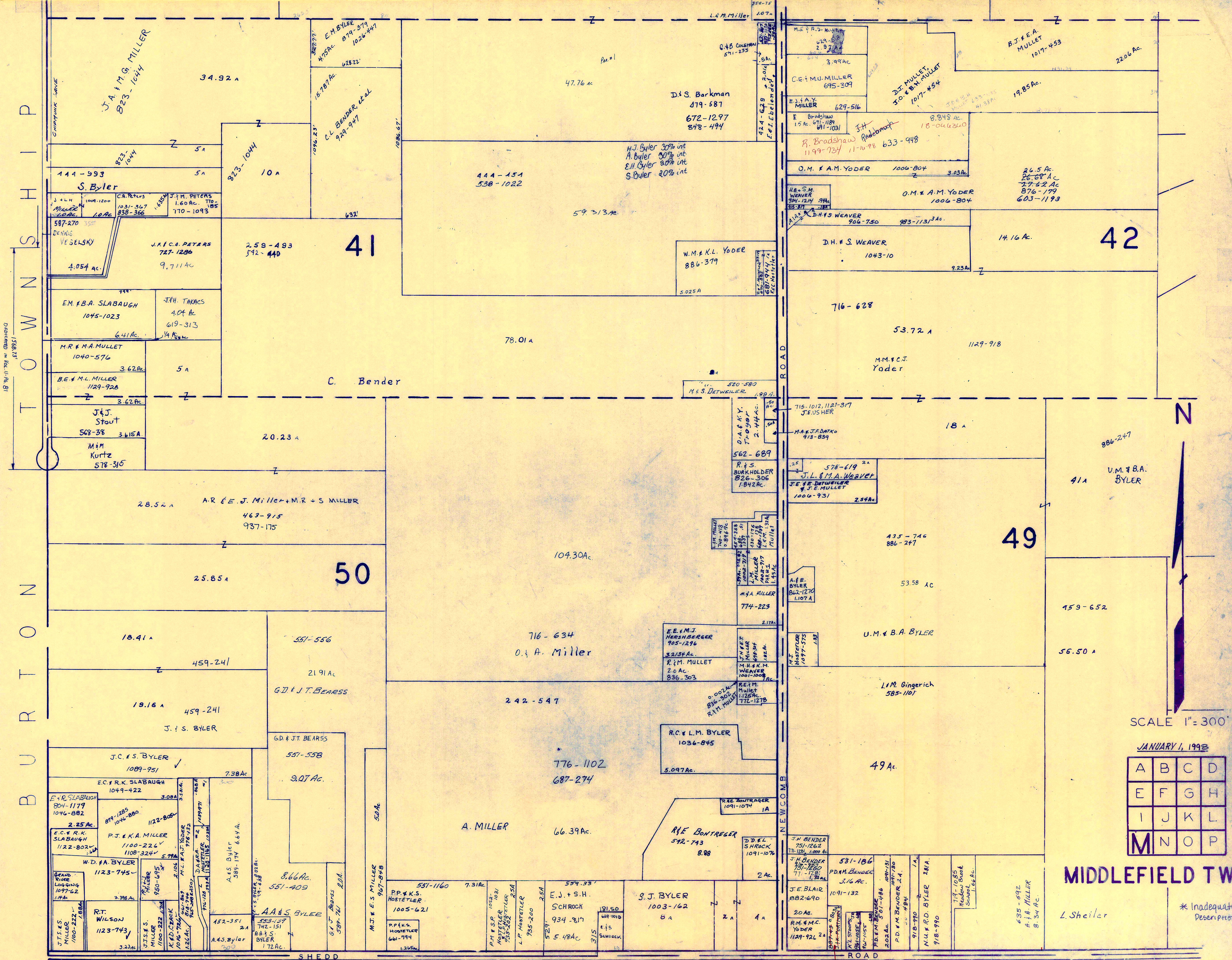
JANUARY 1, 1998

A	B	C	D
E	F	G	H
I	J	K	L
M	N	O	P

MIDDLEFIELD TWP.

RELATIVE REPRESENTATION

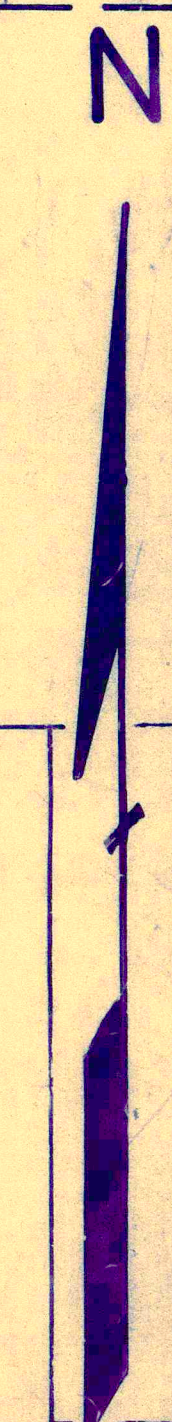
* Inadequate Description



T O W N S H I P

B U R T O N

P A R K M A N T O W N S H I P



SCALE 1" = 300'

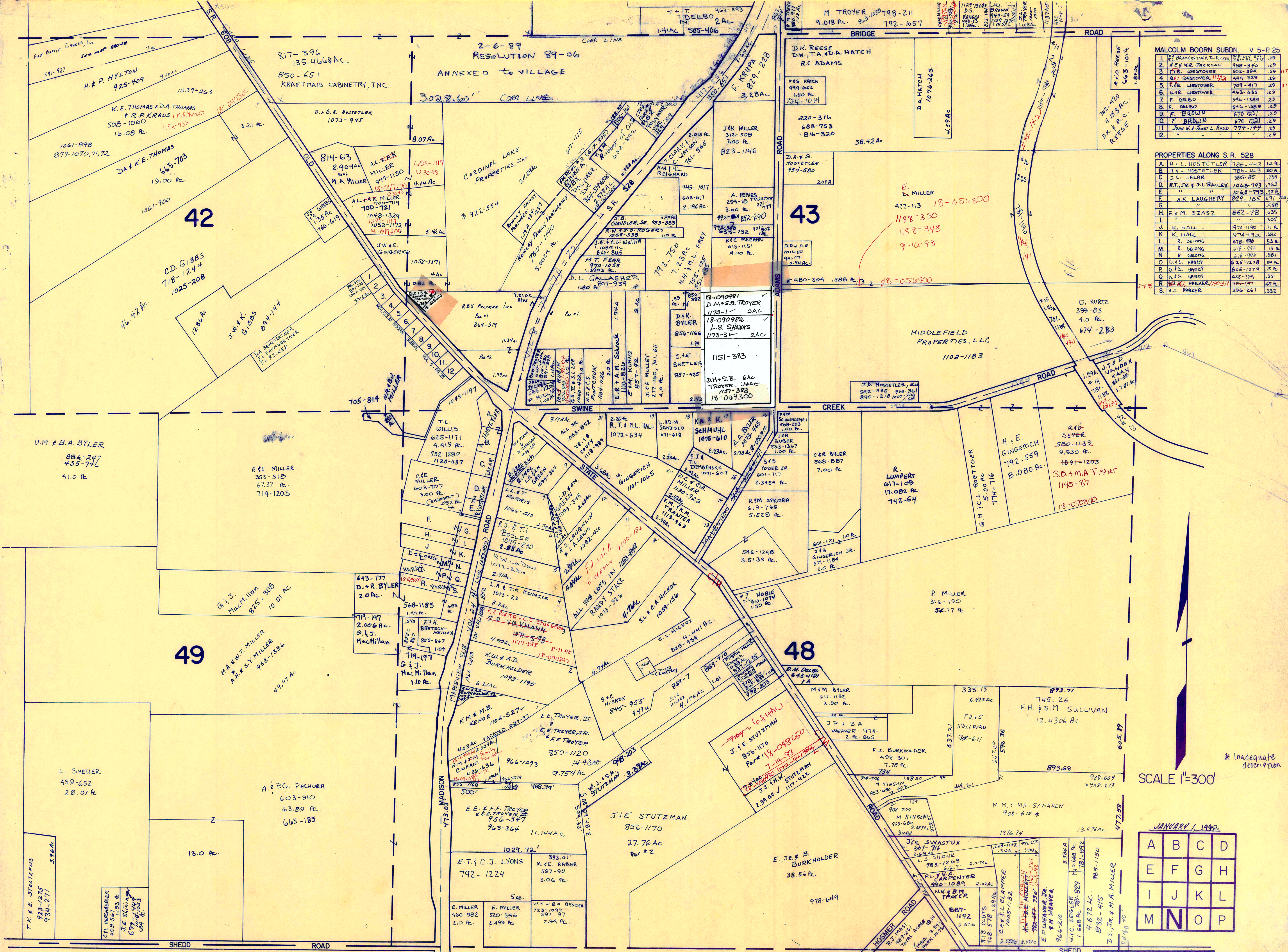
JANUARY 1, 1993

A	B	C	D
E	F	G	H
I	J	K	L
M	N	O	P

MIDDLEFIELD TWP.

* Inadequate Description

RELATIVE REPRESENTATION



MALCOLM BOORN SUBDN. V 5-P 25

1	D. BAUMGARTNER, TR. RESCOR	786-443	12.9
2	R. E. MAR. JACKSON	988-240	2.9
3	F. B. WESTOVER	502-394	2.9
4	H. W. WESTOVER	444-329	2.9
5	F. B. WESTOVER	799-417	2.9
6	H. W. WESTOVER	463-635	2.9
7	F. DELBO	546-1389	2.9
8	F. DELBO	546-1389	2.9
9	F. DELBO	670-721	2.9
10	F. DELBO	774-174	2.9
11	John W. J. Reed	774-174	2.9
12			2.9

PROPERTIES ALONG S. R. 528

A	R. L. HOSTETLER	786-443	12.9
B	R. L. HOSTETLER	786-443	12.9
C	J. C. LAZAR	585-85	7.34
D	R. T. JR. & J. L. BAILEY	1068-793	7.63
E	"	1068-793	7.63
F	A. F. LAUGHERY	829-185	15.7
G	"	"	15.7
H	E. M. SZASZ	862-78	6.35
I	"	"	6.35
J	K. HALL	974-190	7.1
K	K. HALL	974-190	7.1
L	R. DELONG	678-98	5.3
M	R. DELONG	678-98	5.3
N	R. DELONG	678-98	5.3
O	D. S. HARDY	625-1278	5.8
P	D. S. HARDY	625-1279	5.8
Q	D. S. HARDY	625-1279	5.8
R	D. S. HARDY	625-1279	5.8
S	H. J. PARKER	356-147	6.5
T	H. J. PARKER	356-147	6.5

* Inadequate description

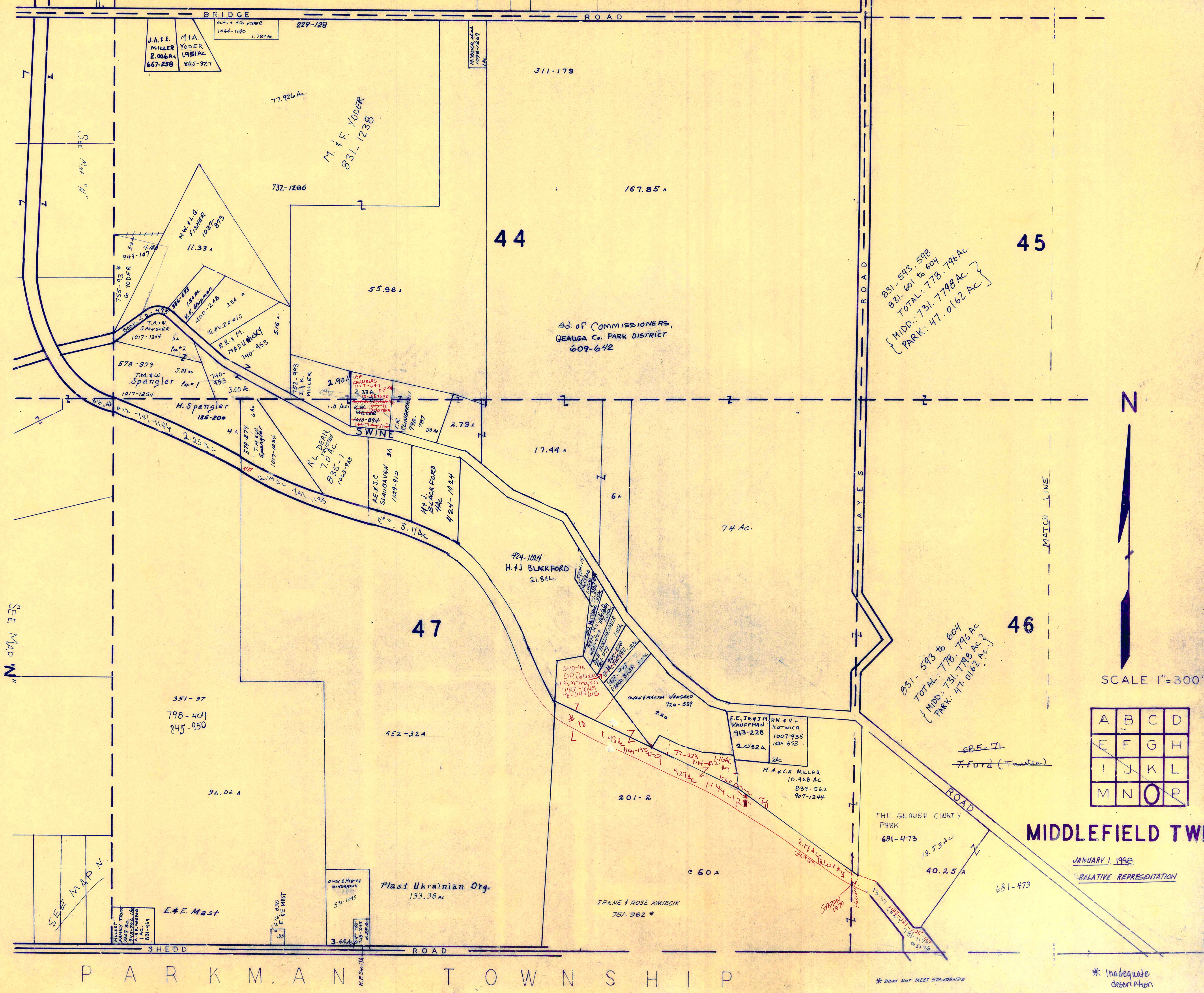
SCALE 1"=300'

JANUARY 1, 1992

A	B	C	D
E	F	G	H
I	J	K	L
M	N	O	P

P A R K M A N T O W N S H I P

MIDDLEFIELD TWP. "N"
RELATIVE REPRESENTATION



J.A.F.E. MILLER
2.006A
667-238

M.F.A. YOSER
1.951Ac
855-827

M.M. & M.B. YOSER
1044-1140
1.787Ac

229-128

311-179

SEE MAP "N"

77.926A

M.F.F. YOSER
831-1238

732-1286

167.85 A

44

45

831-593, 598
831-601 to 604
TOTAL: 778.796 Ac
MIDD: 731.7798 Ac
PARK: 47.0162 Ac

Bd of Commissioners,
GEALGA Co. PARK DISTRICT
609-642

M.W. & L.G. FISHER
1037-873
11.33 A

G.V. DAVIS
400-248
33A A

T.A.W. SPANGLER
1017-1254
5A

R.R. & M. MADUWKY
140-953
51.6 A

H. Spangler
135-206
2.25 Ac

R.L. DEAN
70 AC.
835-1
1005-933

SWINE

17.44 A

SEE MAP "N"

47

46

831-593 to 604
TOTAL: 778.796 Ac
MIDD: 731.7798 Ac
PARK: 47.0162 Ac

H. & J. BLACKFORD
21.84 Ac

74 AC.



SCALE 1"=300'

A	B	C	D
E	F	G	H
I	J	K	L
M	N	O	P

351-97
798-409
845-950

452-324

96.02 A

SEE MAP "N"

E.F.E. Mast
53-1095

Plast Ukrainian Org.
133.38 Ac

E.F.E. Mast
53-1095

3.6A

IRENE & ROSE KWIEC
751-982 *

E.E. J.R. & M. KAUFFMAN
913-228
1007-935
1004-653

M.A. & L.A. MILLER
10.968 Ac
834-562
907-1244

THE GERUGH COUNTY PARK
681-473

685-71
T. Ford (Trustee)

MIDDLEFIELD TWP.

JANUARY 1, 1998
RELATIVE REPRESENTATION

PARKMAN TOWNSHIP

* DOES NOT MEET STANDARDS

* Inadequate description

45

WHITEFORD WOODS Co.
500 AC
775-396

311-179

775-396

46

831-601 to 604
TOTAL: 778.796 Ac.
{ MID: 731.7798 Ac.
{ PARK: 47.0162 Ac. }

685-71

TAX DUPLICATE TOTAL
(281.57 AC)

F. Ford
(TRUSTEE)

SWINE CREEK ROAD

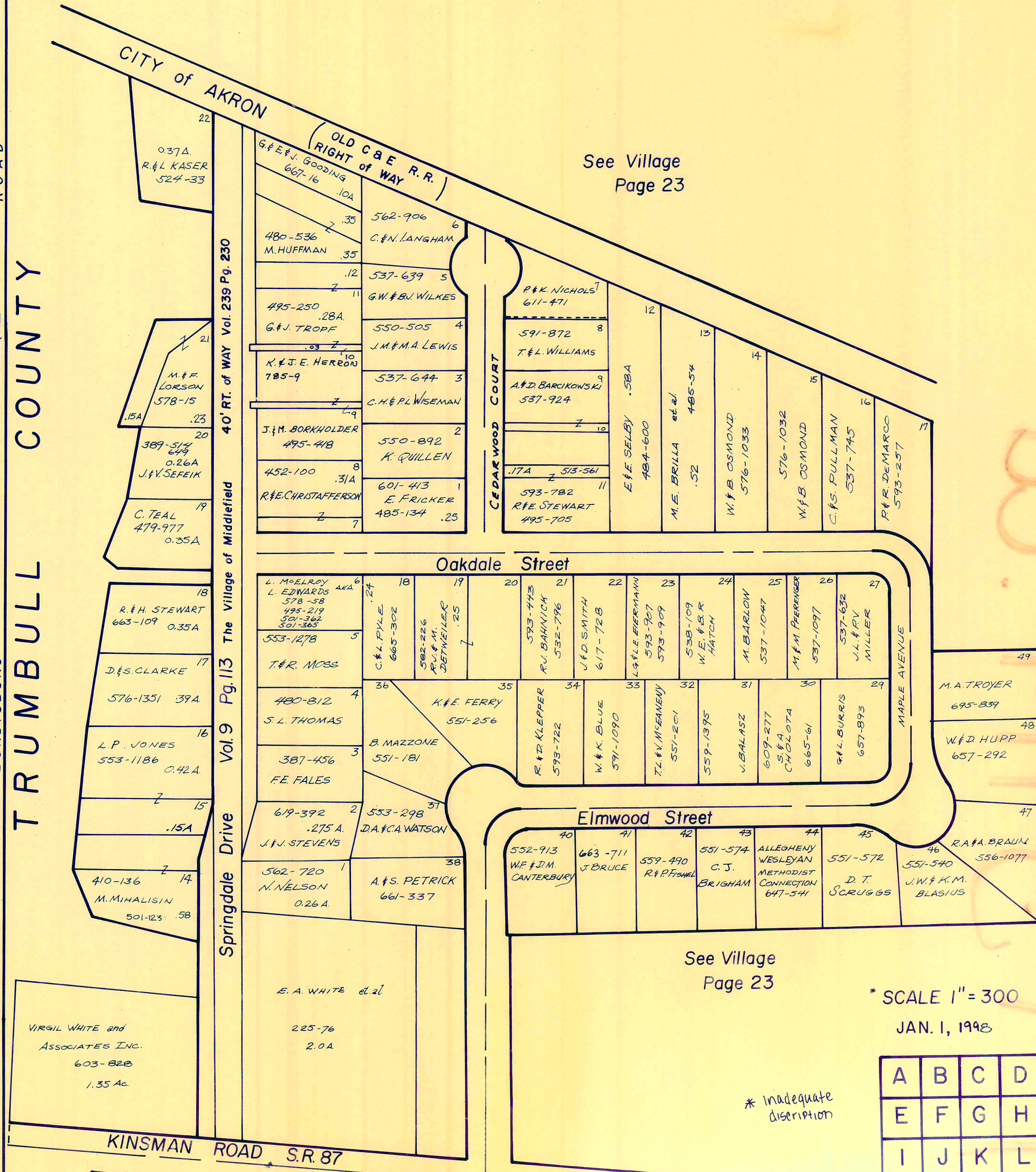
PARKMAN TWP

BUNDSBURG ROAD
TRUMBULL COUNTY

CITY OF AKRON

OLD C & E R.R.
RIGHT OF WAY

See Village Page 23



See Village Page 23

SCALE 1" = 300
JAN. 1, 1948

* Inadequate description

A	B	C	D
E	F	G	H
I	J	K	L
M	N	O	P

MIDDLEFIELD TWP.
RELATIVE REPRESENTATION

* ONLY TWP. MAP